

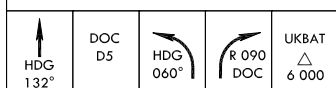
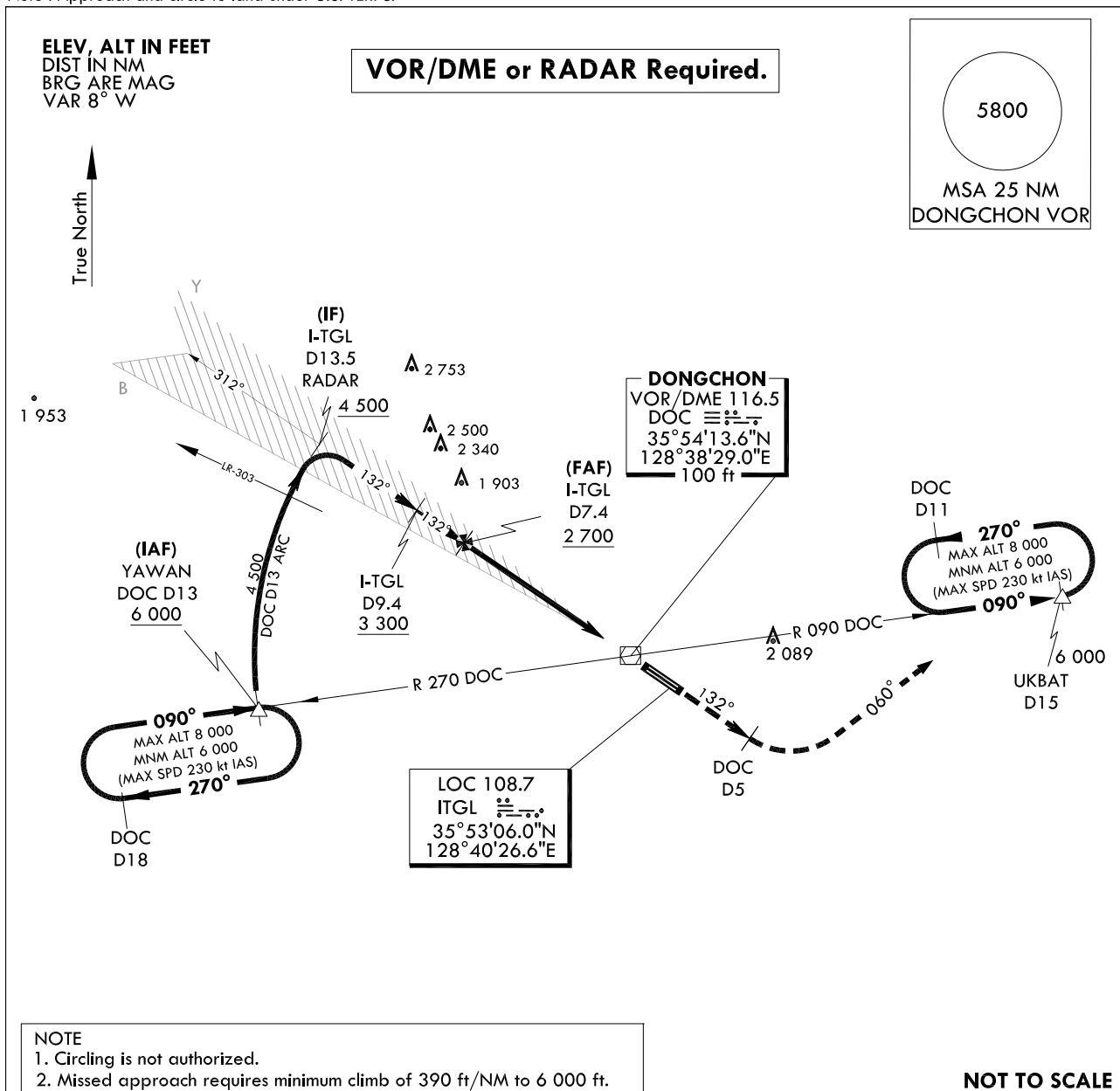
**INSTRUMENT
APPROACH
CHART**

AERODROME ELEV 120 ft
HEIGHTS RELATED TO
THR RWY 13R - ELEV 110 ft
HIGHEST ELEV TDZ 111 ft

DAEGU APP 135.9 346.3
DAEGU TWR 126.2 236.6
365.0

DAEGU/Daegu Intl(RKTN)
ILS
RWY 13R

Note : Approach and circle to land under U.S. TERPS.

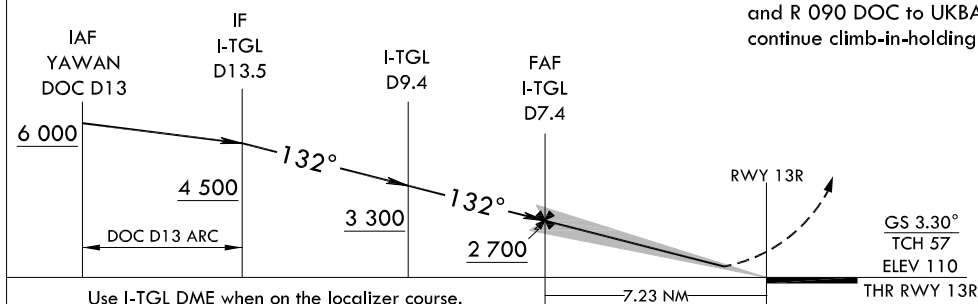


MISSED APPROACH CLIMB RATE TABLE

RWY	Knots	60	120	180	240	300	TO
13R	V/V(fpm)	390	780	1 170	1 560	1 950	6 000

MISSED APPROACH

Climb to 6 000 ft via HDG 132° to DOC 5 DME and climbing left turn HDG 060° to intercept R 090 DOC and R 090 DOC to UKBAT and hold, continue climb-in-holding to 6 000 ft.



CATEGORY		A	B	C	D	E
S-ILS 13R	FULL		657 - 1 1/2	546(600 - 1 1/2)		
	ALS INOP		657 - 1 5/8	546(600 - 1 5/8)		

Change : Information of glide slope and Amended phrases(MIN → MNM, I-TGL DOC D7.4 → I-TGL D7.4).

INTENTIONALLY

LEFT

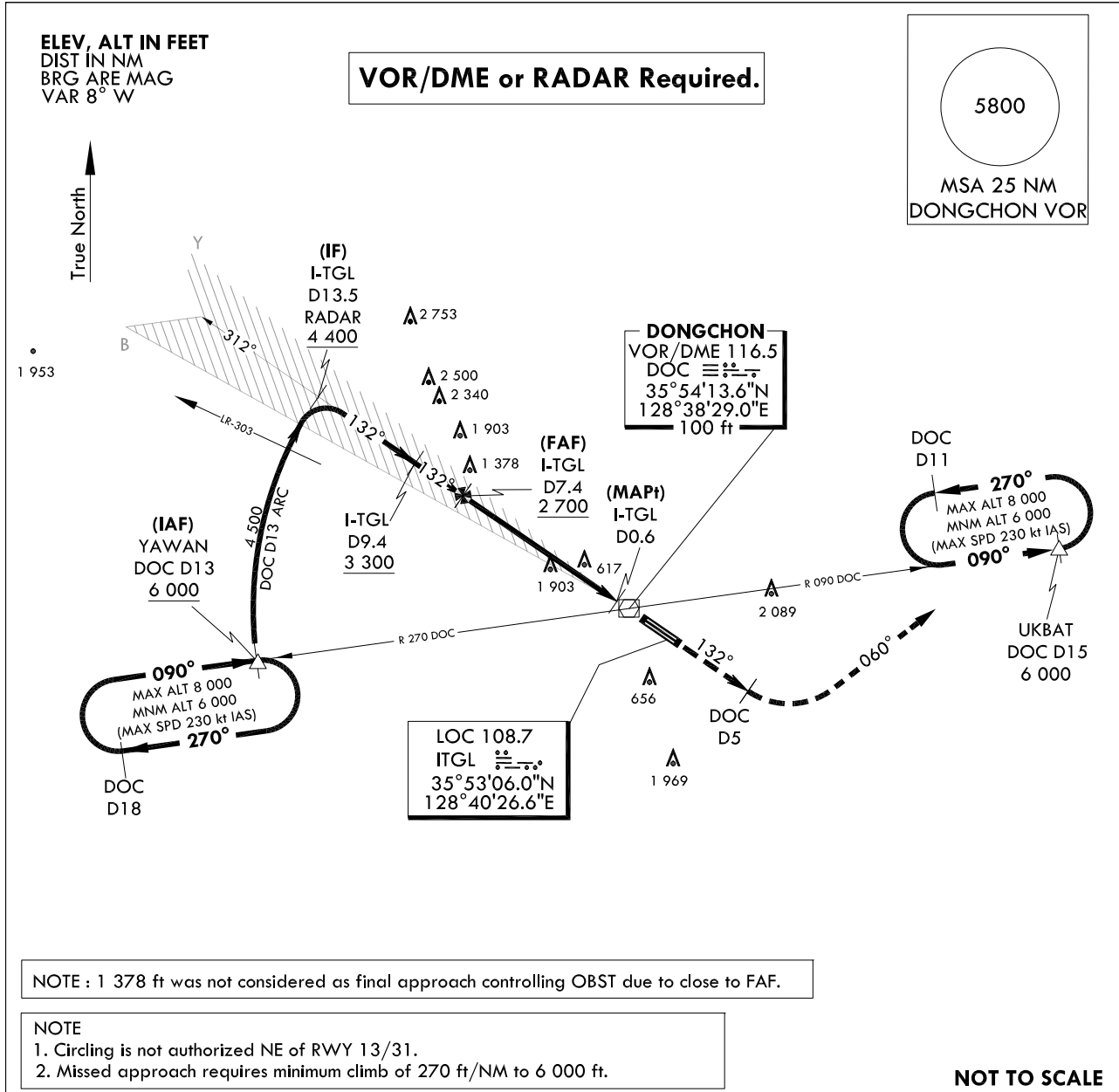
BLANK

AERODROME ELEV 120 ft
HEIGHTS RELATED TO
THR RWY 13R - ELEV **110 ft**
HIGHEST ELEV TDZ **111 ft**

DAEGU	APP	135.9	346.3
DAEGU	TWR	126.2	236.6
		365.0	

**DAEGU/Daegu Intl(RKTN)
LOC/DME
RWY 13R**

Note : Approach and circle to land under U.S. TERPS.

[illegible]

Change : Withdrawal of symbol for glide slope and Amended phrase(MIN → MNM).

INTENTIONALLY

LEFT

BLANK

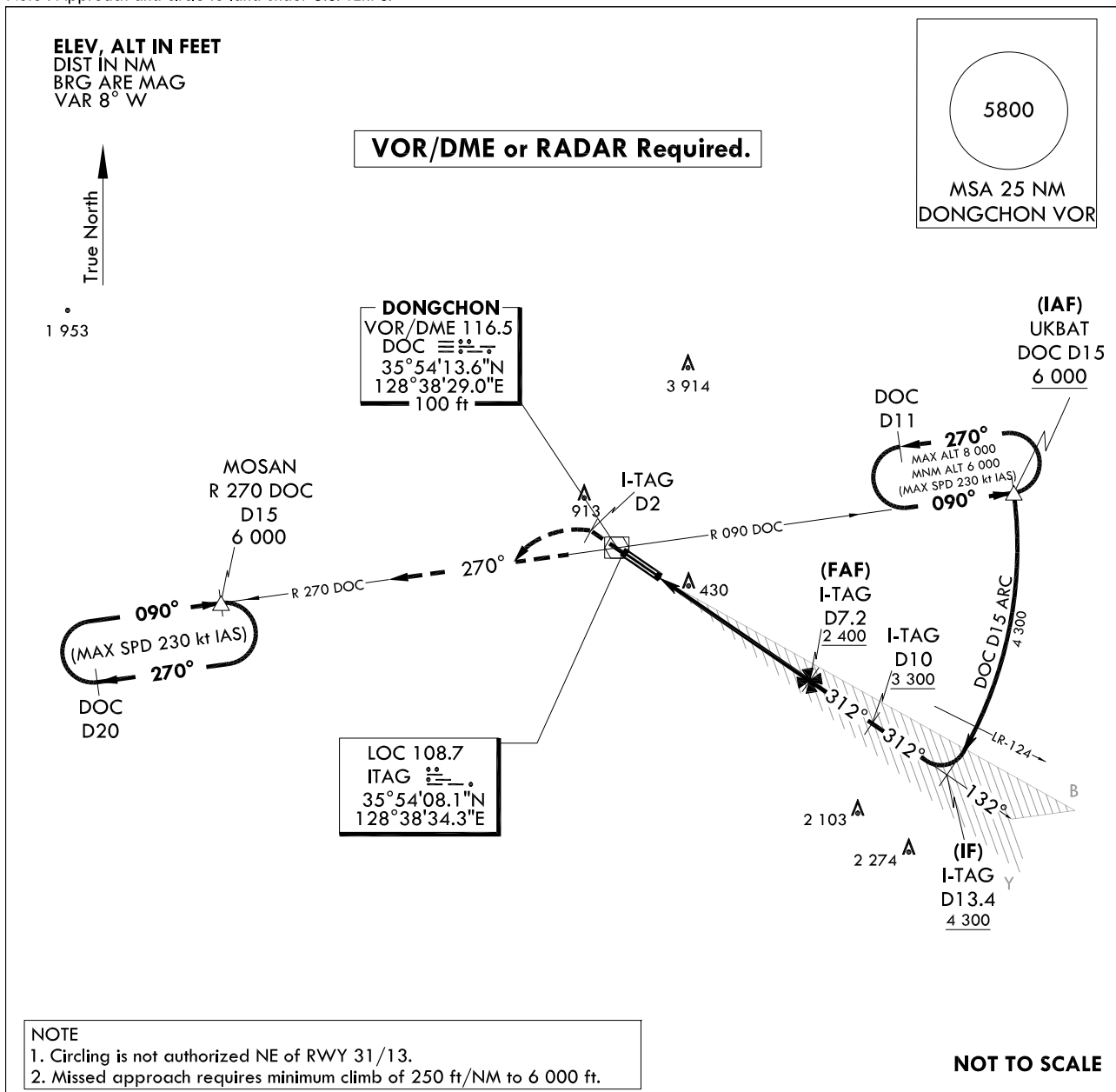
**INSTRUMENT
APPROACH
CHART**

AERODROME ELEV 120 ft
HEIGHTS RELATED TO
THR RWY 31L - ELEV 118 ft
HIGHEST ELEV TDZ 118 ft

DAEGU APP 135.9 346.3
DAEGU TWR 126.2 236.6
365.0

DAEGU/Daegu Intl(RKTN)
ILS
RWY 31L

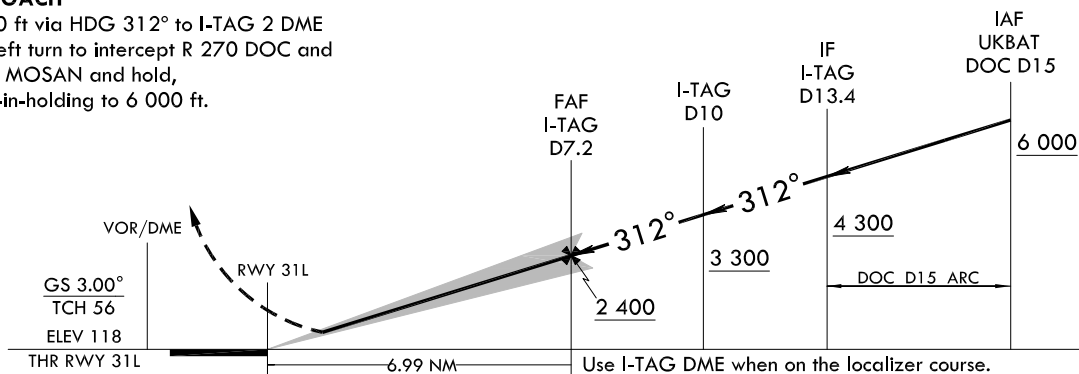
Note : Approach and circle to land under U.S. TERPS.



RWY	Knots	MISSED APPROACH CLIMB RATE TABLE					
		60	120	180	240	300	TO
31L	V/V(fpm)	250	500	750	1 000	1 250	6 000

MISSED APPROACH

Climb to 6 000 ft via HDG 312° to I-TAG 2 DME and climbing left turn to intercept R 270 DOC and R 270 DOC to MOSAN and hold, continue climb-in-holding to 6 000 ft.



CATEGORY		A	B	C	D
S-ILS 31L	FULL		318 / 24	200(200 - 1/2)	
	ALS INOP		318 / 40	200(200 - 3/4)	

Change : Information of glide slope and Amended phrase(MIN → MNM).

INTENTIONALLY

LEFT

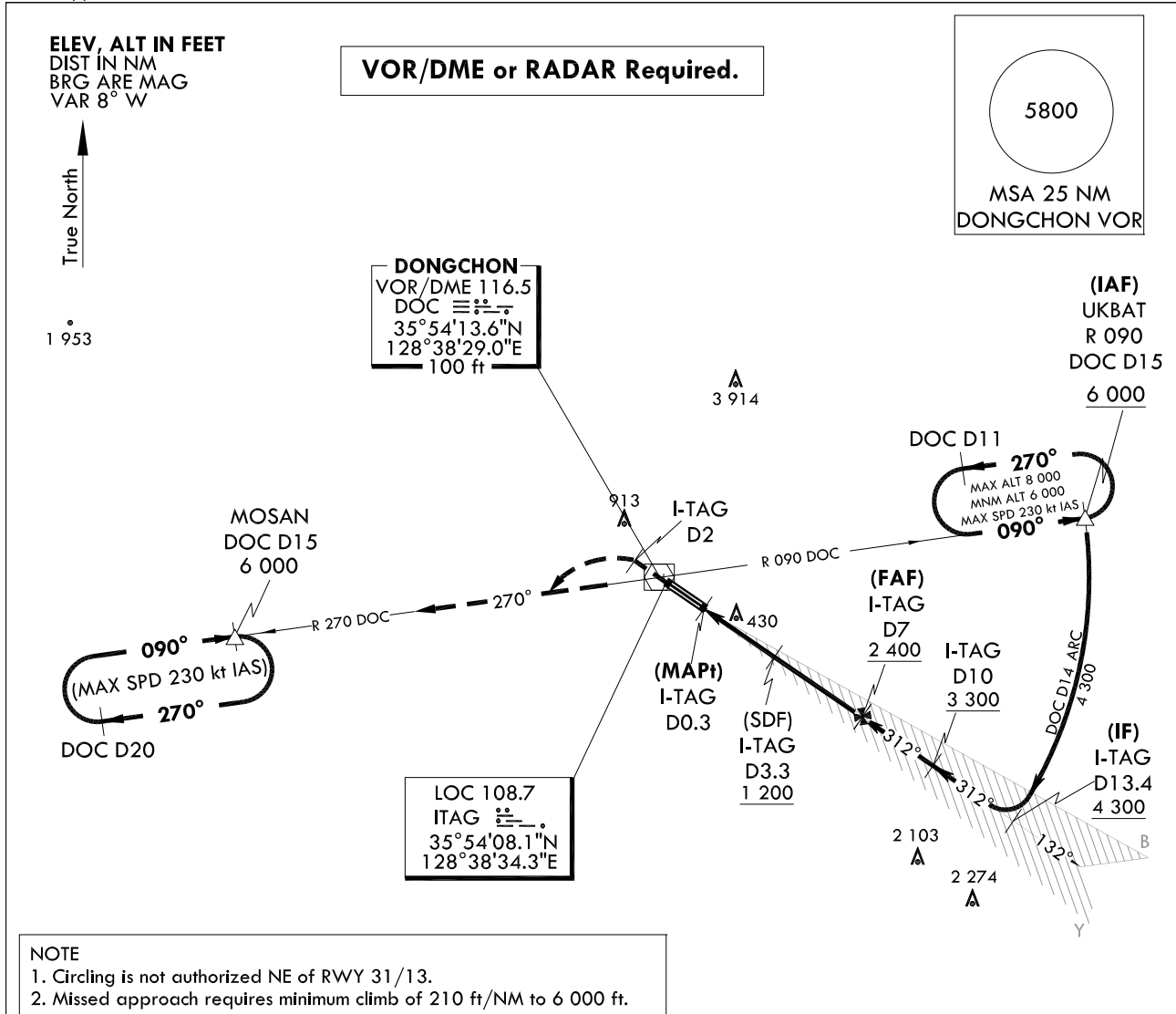
BLANK

AERODROME ELEV 120 ft
HEIGHTS RELATED TO
THR RWY 31L - ELEV **118 ft**
HIGHEST ELEV TDZ **118 ft**

DAEGU	APP	135.9	346.3
DAEGU	TWR	126.2	236.6
		365.0	

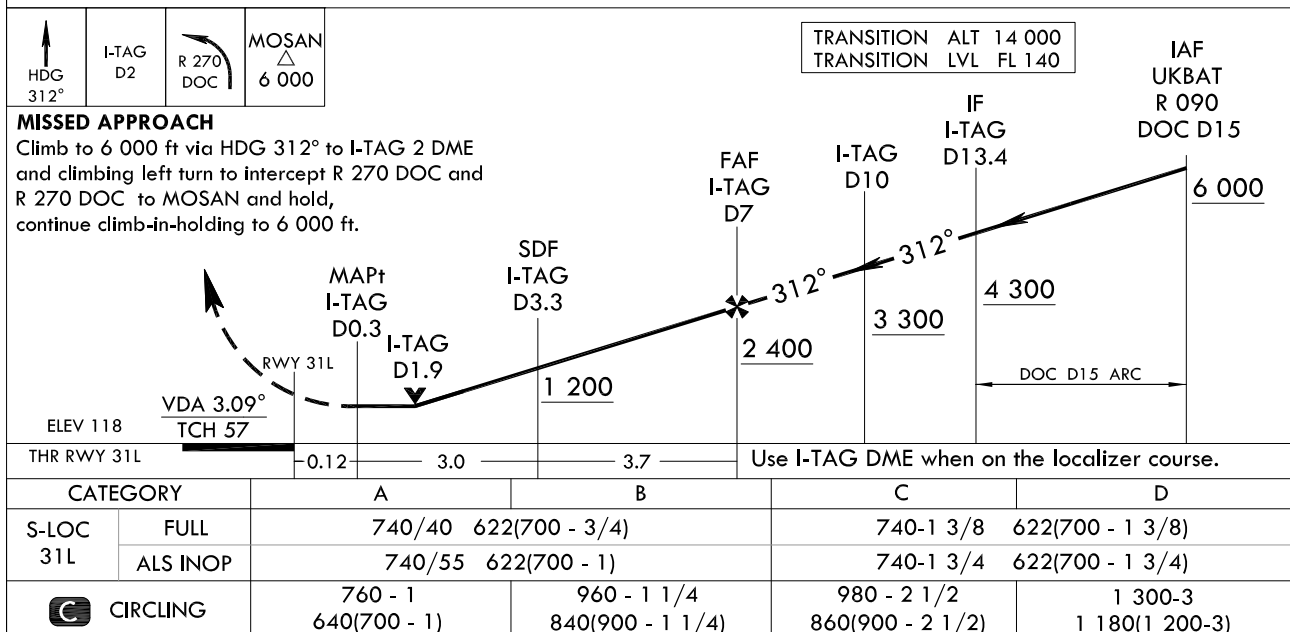
**DAEGU/Daegu Intl(RKTN)
LOC/DME
RWY 31L**

Note : Approach and circle to land under U.S. TERPS.



RWY	Knots	60	120	180	240	T _o
31L	V/V(fpm)	210	420	630	840	6 000

NOT TO SCALE



Change : Withdrawal of symbol for glide slope.

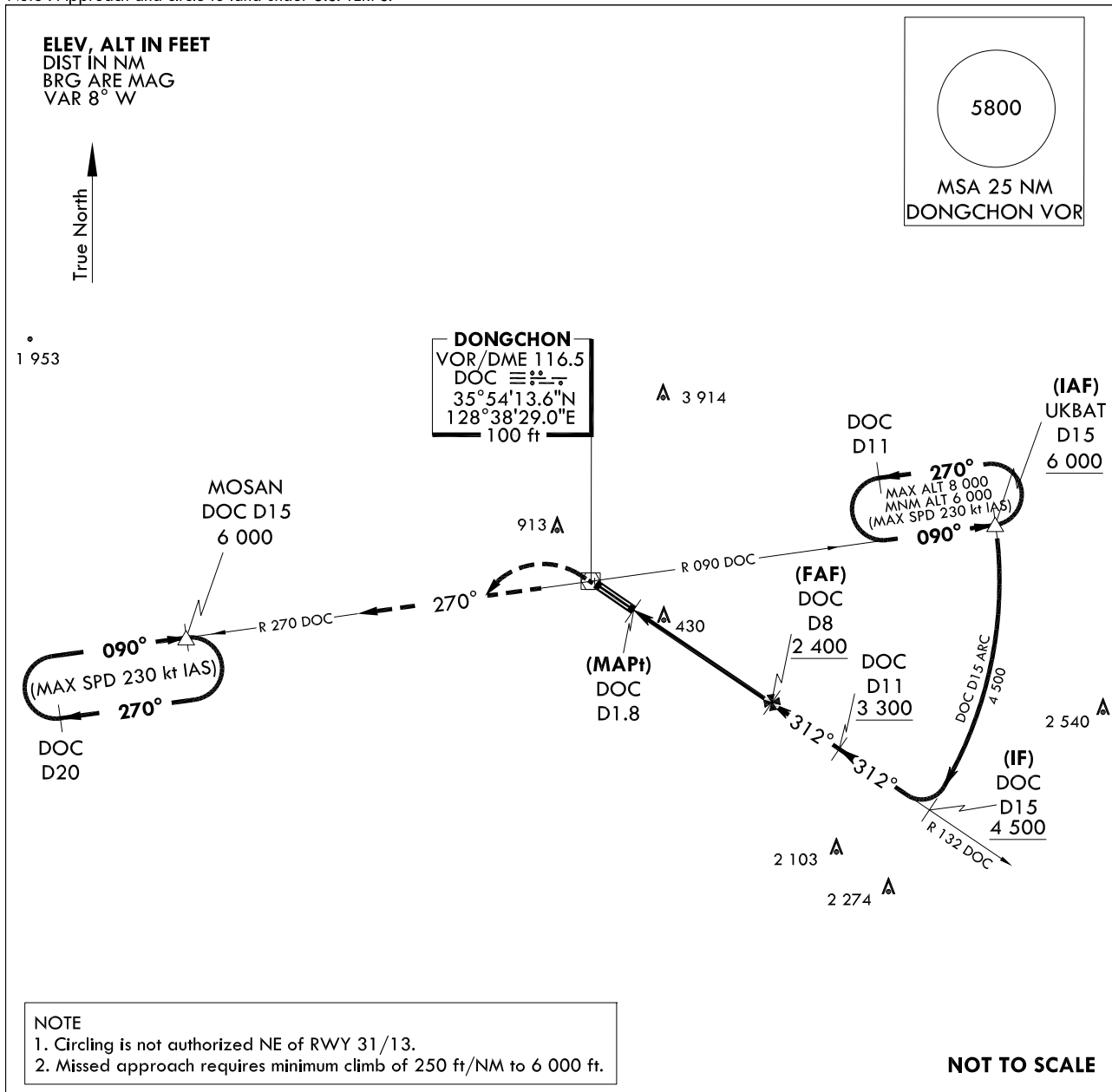
INTENTIONALLY

LEFT

BLANK

INSTRUMENT
APPROACH
CHARTAERODROME ELEV 120 ft
HEIGHTS RELATED TO
THR RWY 31L - ELEV 118 ft
HIGHEST ELEV TDZ 118 ftDAEGU APP 135.9 346.3
DAEGU TWR 126.2 236.6
365.0DAEGU/Daegu Intl(RKTN)
VOR/DME
RWY 31L

Note : Approach and circle to land under U.S. TERPS.

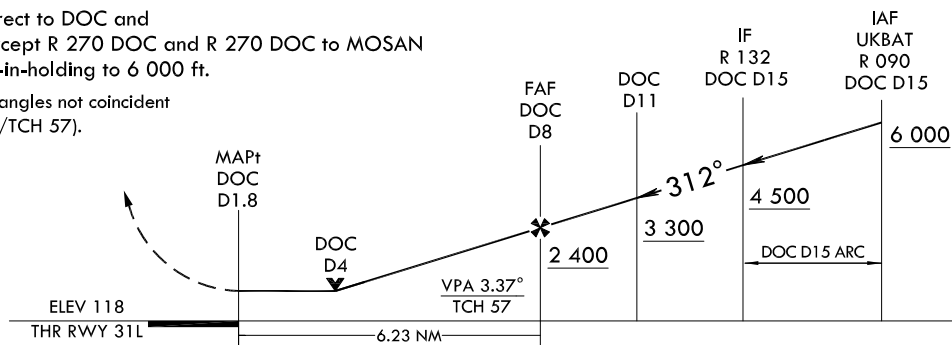


6 000 ↑	DOC ☐	R 270 DOC ↶	MOSAN △ 6 000	TRANSITION ALT 14 000 TRANSITION LVL FL 140		MISSED APPROACH CLIMB RATE TABLE						
				RWY	Knots	60	120	180	240	300	TO	
				31L	V /V(fpm)	250	470	700	930	1 160	6 000	

MISSED APPROACH

Climb to 6 000 ft via direct to DOC and climbing left turn to intercept R 270 DOC and R 270 DOC to MOSAN and hold, continue climb-in-holding to 6 000 ft.

NOTE : VGSI and descent angles not coincident
(VGSI Angle 3.00°/TCH 57).



CATEGORY		A	B	C	D
S-VOR 31L	FULL	880/40 762(800 - 3/4)		880-1 3/4 762(800-1 3/4)	
	ALS INOP	880/55 762(800 - 1)		880-2 1/2 762(800-2 1/2)	
CIRCLING		880 - 1 760(800 - 1)	960 - 1 1/4 840(900 - 1 1/4)	980 - 2 1/2 860(900 - 2 1/2)	1 300-3 1 180(1 200-3)

Change : Amended phrase(MIN → MNM).

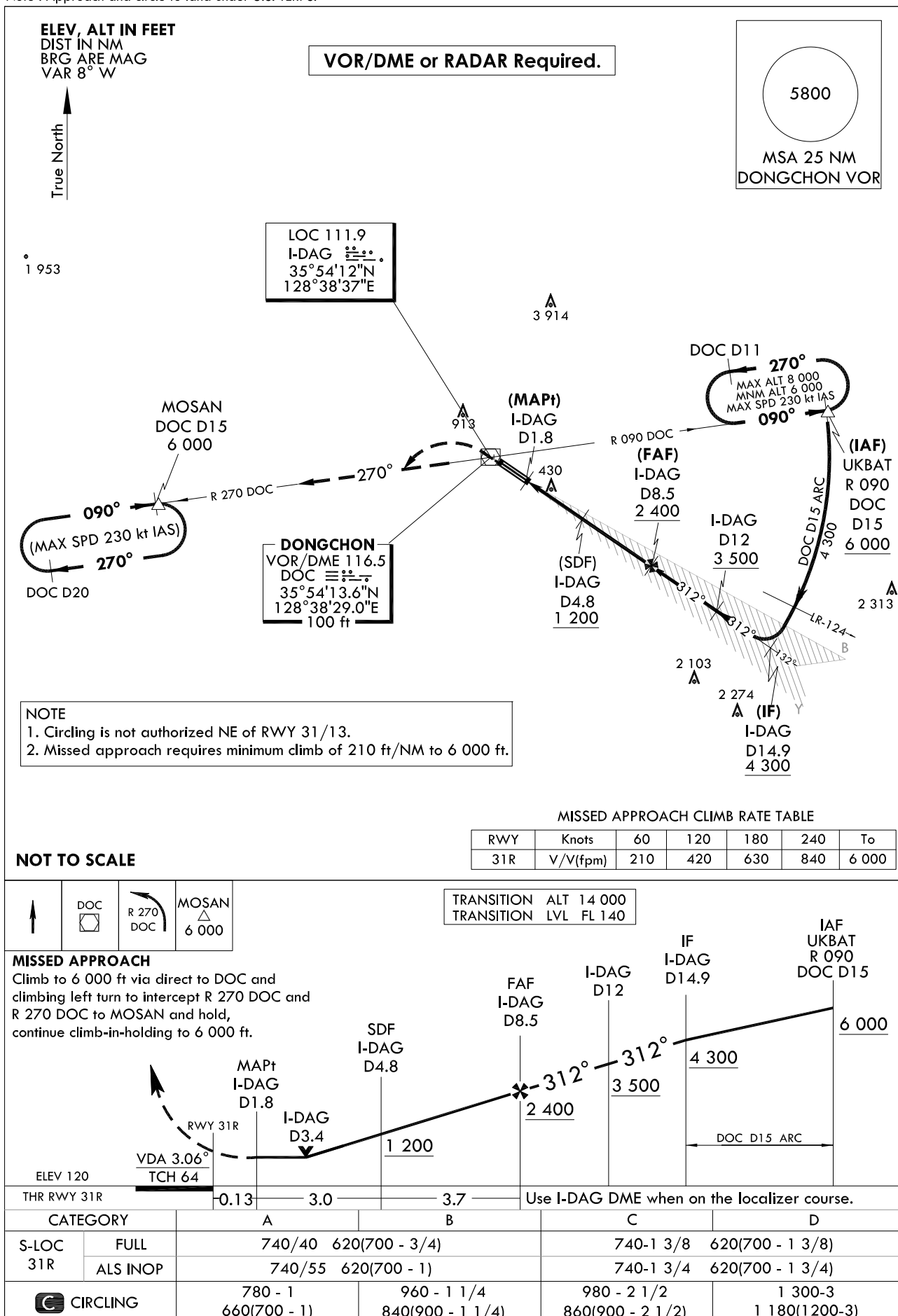
INTENTIONALLY

LEFT

BLANK

INSTRUMENT
APPROACH
CHARTAERODROME ELEV 120 ft
HEIGHTS RELATED TO
THR RWY 31R - ELEV 120 ft
HIGHEST ELEV TDZ 120 ftDAEGU APP 135.9 346.3
DAEGU TWR 126.2 236.6
365.0DAEGU/Daegu Intl(RKTN)
LOC/DME
RWY 31R

Note : Approach and circle to land under U.S. TERPS.



Change : Withdrawal of symbol for glide slope.

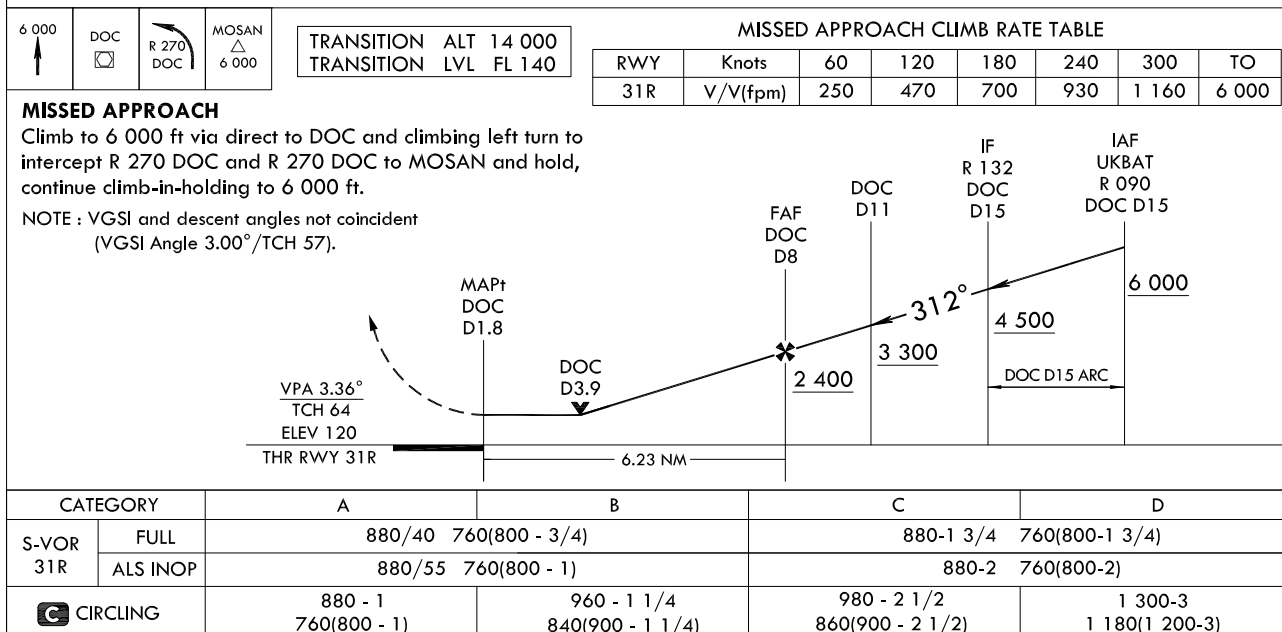
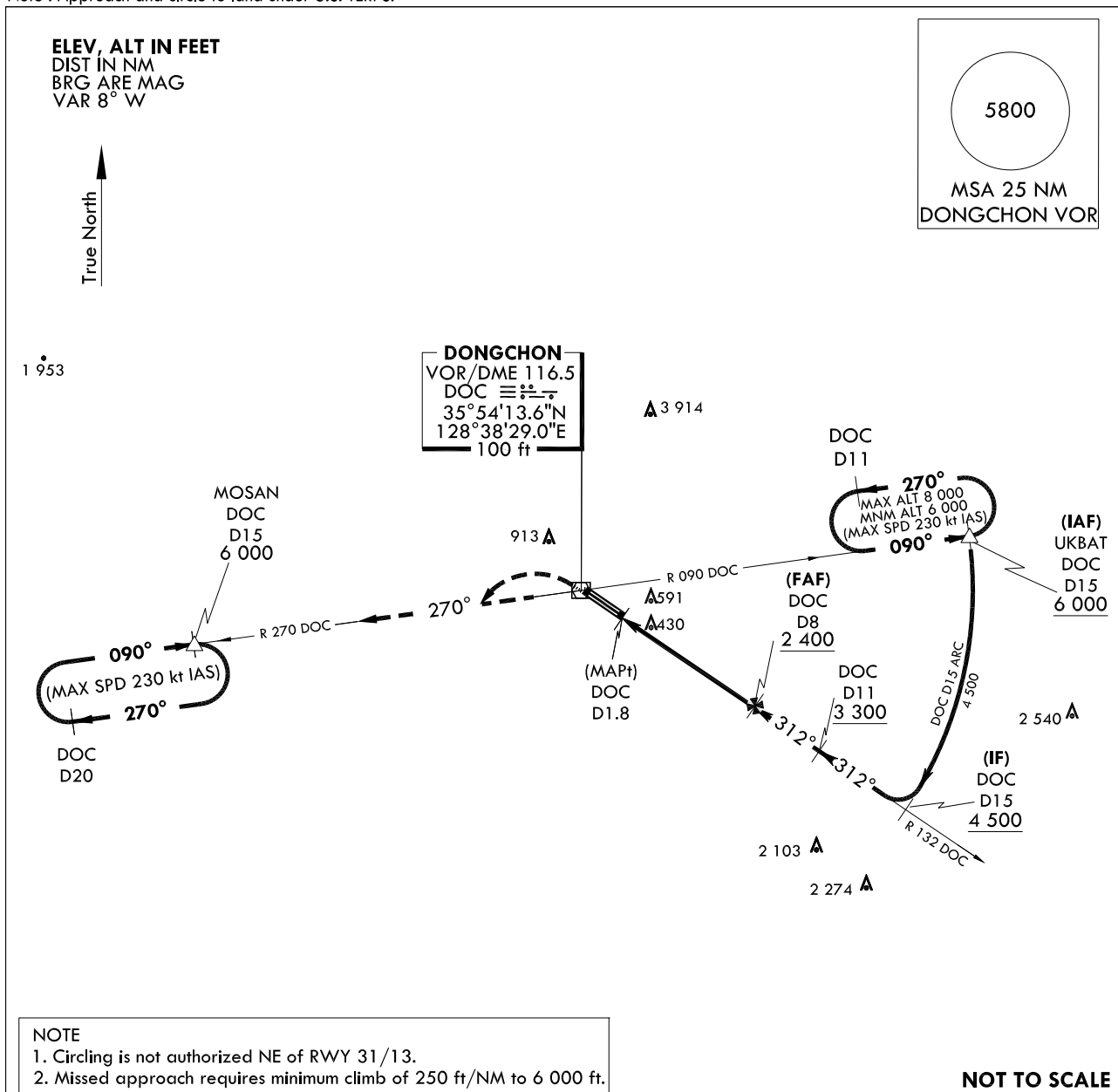
INTENTIONALLY

LEFT

BLANK

INSTRUMENT
APPROACH
CHARTAERODROME ELEV 120 ft
HEIGHTS RELATED TO
THR RWY 31R - ELEV 120 ft
HIGHEST ELEV TDZ 120 ftDAEGU APP 135.9 346.3
DAEGU TWR 126.2 236.6
365.0DAEGU/Daegu Intl(RKTN)
VOR/DME
RWY 31R

Note : Approach and circle to land under U.S. TERPS.



Change : Amended phrases(MIN → MNM, RWT → RWY).

INTENTIONALLY

LEFT

BLANK